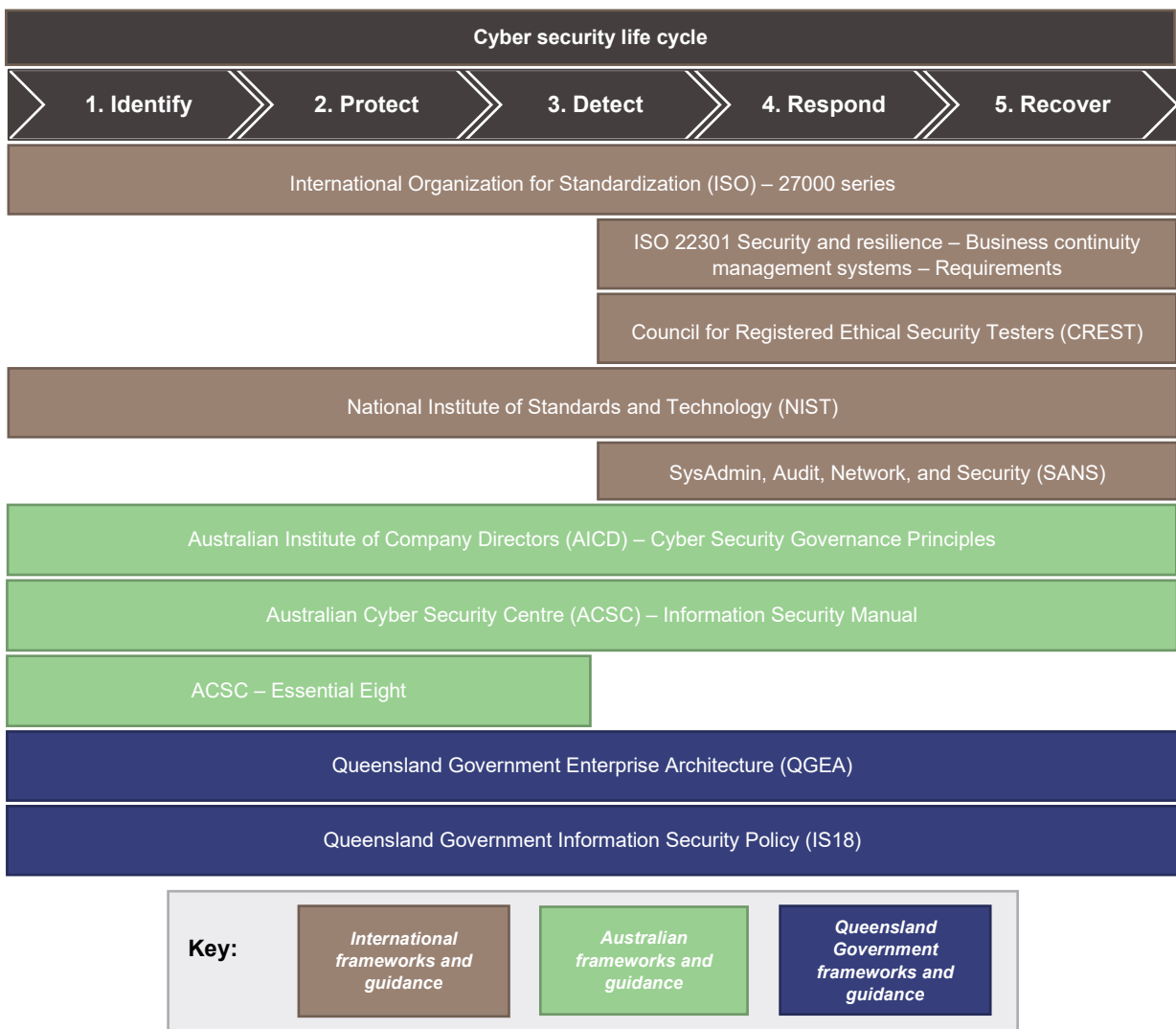


# C. Better practice frameworks

Figure C1 shows a range of international, Australian Government, and Queensland Government frameworks, policies, and guidance that entities could consider in developing strategies and plans for cyber incident response and recovery. These are mapped to the various phases of the cyber security life cycle.

The Cyber Security Unit primarily references requirements and guidance within the ISO 27000 series, but public sector entities can select other frameworks for managing incident response and recovery.

**Figure C1**  
**Better practice cyber security frameworks**



Source: Queensland Audit Office.

